



ERC 045-070VG

Four-wheel counterbalanced
electric forklift

4,500-7,000 lbs.



Adaptable. Powerful. Reliable.

- ERC045VG
- ERC050VG
- ERC055VG
- ERC060VG
- ERC065VG
- ERC070VG

Yale® ERC045-070VG electric counterbalanced four-wheel forklifts give your operation the inside edge on productivity. They feature unmatched versatility and industry proven engineering that shows up for every shift, maximizing material handling throughout your facility.

These lift trucks are designed for demanding indoor applications that require clean, quiet-running, heavy duty capability. Their brushless AC traction and hydraulic motors reduce maintenance costs and increase runtime through greater efficiency. Thoughtful ergonomics reduce operator fatigue and increase comfort, helping to increase overall productivity.



PRODUCTIVITY

Equipped with efficiency boosting features that help keep the operator productive all shift long



OPERATOR COMFORT

Operator compartment optimizes comfort and maximizes performance



DEPENDABILITY

Time-tested technology for reliable operation, day in and day out



LOWER OPERATING COST

Save time and money with longer service intervals and fewer parts



DID YOU KNOW? →

Best-in-class operations have a dock-to-stock cycle time of less than three hours.¹



Application-matched performance.

Downtime is not an option. The Yale ERC-VG series is designed to get the job done, with industrial-grade components and smart engineering to provide productive value and long life. Available in 36, 48, and 80 volts to meet your application needs, these forklifts excel everywhere from tough, short shuttle applications, to long runs and ramp usage.



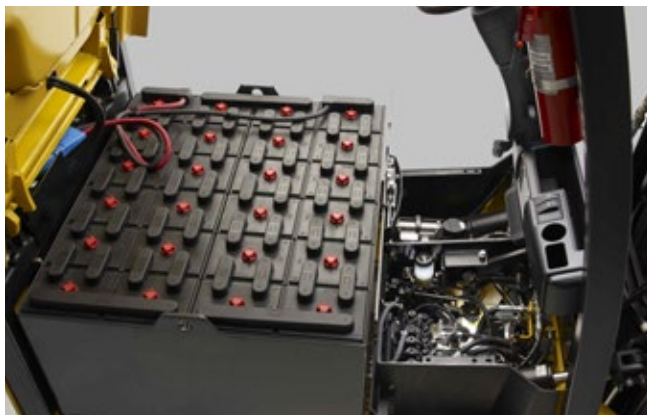
YALE VISION™ +

Proprietary telematics solution provides insights and controls to help improve operator behavior, control access to equipment, confirm pre-shift checklist completion, and monitor equipment and operator utilization.



HI-VIS™ MAST

Offered as standard equipment, the Hi-Vis mast provides excellent visibility through and around the mast, without sacrificing rigidity to help keep operators working confidently.



EASY SERVICE ACCESS

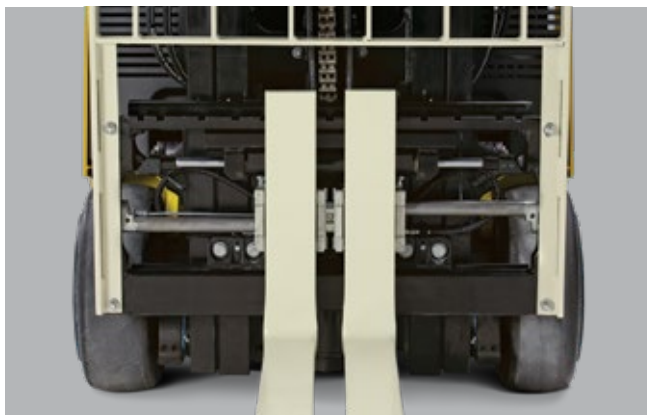
Engineered for simplified maintenance, featuring easily removable floor plates that require no tools, and a rear-hinged hood that provides convenient access for servicing the truck.



MULTIFUNCTION DISPLAY

Features four operator selectable performance modes, indicates battery discharge, steer angle, travel direction, traction throttle and truck speed.

DID YOU KNOW? →
Best-in-class operations
ship more than 99%
of orders on time.¹



INTEGRAL SIDESHIFTING FORK POSITIONER +

The operator can adjust the fork position to accommodate various pallet sizes without getting off the unit.

INDUSTRIAL GRADE COMPONENTS

Industrial-grade components and smart engineering provide productive value and long life:

- CANbus technology reduces wiring and connections for greater reliability
- Sealed electrical connections resist moisture and dirt
- Drive axle uses high-strength gears and shafts to resist stress from quick directional changes
- Steer axles use tough cast ductile iron for one-piece integrity and durability to support the counterweight

Operator-focused comfort.

With skilled operators harder to find and retain, you need a responsive forklift that's easy to drive and comfortable all day long. A customizable compartment with various standard ergonomic features support operators throughout their shift to help maximize productivity. Take comfort up a level with additional options for specific application needs.



EASY ACCESS

3-point entry/exit with low step in height, large contoured grab handles and deep, anti-skid steps helps minimize strain and fatigue when operators are frequently on and off the truck.



OPEN FLOOR PLATE DESIGN

Open floor plate design offers plenty of foot room while the extra-thick floor mat absorbs shock and channels moisture away from key components.



REAR DRIVE HANDLE +

Forklift operators spend a lot of time driving in reverse. Take the twisting and straining out of reverse operation with an optional rear drive handle and a swiveling seat.



TELESCOPING STEER COLUMN +

The optional telescoping steer column with tilt memory offers superior adjustability to accommodate wide range of operators.



ELECTROHYDRAULIC CONTROLS +

Optional armrest with AccuTouch minilevers offer fingertip control of travel direction, horn, and hydraulic functions. Standard mechanical levers are low effort and ergonomically placed, providing operator comfort.



LOADED WITH STANDARD FEATURES

Various standard features help the operator remain productive and comfortable including an operator presence system and power-assisted braking.

+ = Optional equipment



Engineered for the long haul.

Forklifts are essential to keeping the entire operation moving, so you can't afford to have a unit out of service. Yale ERC045-070VG four-wheel counterbalanced electric forklifts are designed with quality components and simple maintenance requirements to greatly diminish downtime and unplanned service.

AC TECHNOLOGY

Proven AC traction and hydraulic motors completely eliminate brushes and associated rigging for reduced maintenance costs.

AUTO DECELERATION SYSTEM

Help extend brake life with traction motor regenerative braking, and an automatic electric park brake engagement when AC traction motor reaches zero.

WET DISC BRAKES

Wet disc brakes are standard equipment on ERC045-070VG series forklifts. They provide 5 times more service life vs. conventional dry drum or disc brakes. The enclosed system is impervious to water, dust and contaminants and requires no adjustments.

THERMAL MANAGEMENT SYSTEM

Protect motors from overheating with automonitoring internal temperature sensors..

ELECTRICAL SYSTEM w/ CANbus COMMUNICATION

Fewer connections and less complex wiring helping simplify and reduce maintenance.

EASY SERVICE ACCESS

Component covers are easily removable and require no tools to access powertrain.

About Yale

Yale Lift Truck Technologies leverages over a century of material handling experience and substantial investment in innovation to bring the most advanced technology-driven lift truck solutions to market. The company offers a full line of award-winning lift trucks, including reach trucks, order pickers, turret trucks, pallet jacks and trucks, pallet stackers, tow tractors and counterbalanced forklifts, as well as powerful operator assist solutions, proven robotics and a wide range of power sources to help customers adapt to today's demanding supply chain. Yale and its independent dealer network support these solutions with comprehensive after-sales service, parts, financing and training.



Yale Lift Truck Technologies
P.O. Box 7367
Greenville, NC 27835-7367
U.S.A.

yale.com



EXPLORE MORE
ONLINE.



MATERIALS HANDLING FOR:

Third-party logistics (3PL)

Auto parts distribution

Beverage

Cold & frozen foods

Food distribution

Food processing


Furniture & furnishings

Government

Health & pharma

Home centers & durables

Retail & e-commerce

© 2024 Hyster-Yale Materials Handling, Inc., all rights reserved. YALE and  are trademarks of Hyster-Yale Materials Handling, Inc.

Trucks may be shown with optional equipment and/or features not available in all regions. Truck performance may be affected by the condition of the vehicle, how it is equipped and the application. Specifications are subject to change without notice. Consult your Yale® Dealer if any of the information shown is critical to your application.

CERTIFICATION: Yale lift trucks meet the design and construction requirements of B56.1-1969, per OSHA Section 1910.178(a)(2), and also comply with the B56.1 revision in effect at time of manufacture. Classified by Underwriters' Laboratories, Inc.

¹ 2023 WERC DC Measures Report.